

**PRIMARY** STAGES  
AT 59E59 THEATERS

ARTISTIC DIRECTOR  
**ANDREW LEYNSE**

EXECUTIVE DIRECTOR  
**SHANE D. HUDSON**

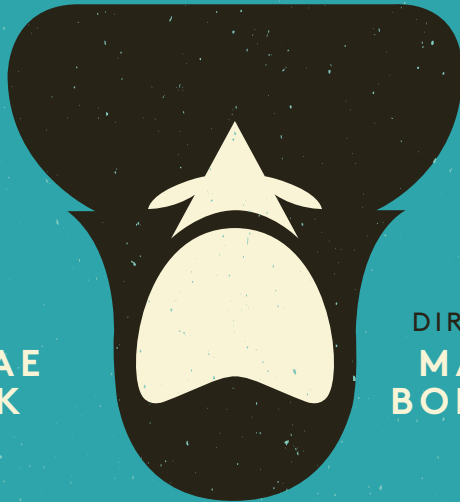
FOUNDER  
**CASEY CHILDS**

IN ASSOCIATION WITH  
**JAMIE deROY**

PRESENTS



# PEERLESS



BY  
**JIEHAE  
PARK**

DIRECTED BY  
**MARGOT  
BORDELON**



THEATER A

SEPTEMBER 24 – NOVEMBER 6

# WELCOME TO PEERLESS

“SOMETHING WICKED THIS WAY COMES”

In Shakespeare’s *Macbeth*, we hear this famous line as the witches herald the approach of the murderous Scot. He’s been reduced to a “thing,” no longer human, and defined by the evil that courses through him.

This same vein of wickedness borne by “vaulting ambition” runs through Jiehae Park’s *peerless*, although the source of the evil is far less clear.

Is it something inherent in the character of our twins, L and M?

Is it in the wicked deeds they undertake to achieve their dreams?

Or, more insidiously, is it the result of a system so corrupt that it forces its users to mold themselves to corruption in order to survive?

Set in the harrowingly cutthroat world of elite college admissions, Jiehae uses Shakespeare’s work as a springboard to explore the overwhelming pressure and isolation that students face today. In the play, there seems to be a devastatingly narrow pathway to success, and great sacrifices must be made to achieve it. The contention around who “deserves” a chance to go to an elite school is not just confined to the stage, however. Recent events like the 2019 College Admission bribery scandal and this fall’s Supreme Court case over Affirmative Action speak to the timeliness of Jiehae’s script and the consequences of a system that promises so much, but rewards so few. There couldn’t be a better time for this play, and we are so glad to be able to present *peerless* in its New York premiere with the incredible Margot Bordelon on as director and our long-time friend Jamie deRoy as Associate Producer.

Another partner on this production is The Tow Foundation, who named Jiehae a 2019-20 Tow Foundation Playwright-in-Residence for *peerless*, a well-deserved recognition for her work as a playwright. Jiehae is a writer with a brilliant mind and a courageous heart, creating plays that take advantage of all the artform can be. Her work is emotional, political, provocative, theatrical, and at its core, deeply tied to our shared humanity, asking us to reexamine how we engage with the world around us.

For this production, we are working with Jiehae and curator Vickie Ramirez to deepen the audience’s experience with a series of free panels and play readings around the themes of the play. We hope you will join us in taking a deeper dive into the world of this piece.

You can find more information on the programming here: [CLICK HERE](#)

Thank you again for making Primary Stages your Off Broadway home.  
Enjoy the show!



*Andrew*  
ANDREW LEYNSE  
Artistic Director



*Shane*  
SHANE D. HUDSON  
Executive Director



ARTISTIC DIRECTOR ANDREW LEYNSE    EXECUTIVE DIRECTOR SHANE D. HUDSON    FOUNDER CASEY CHILDS

IN ASSOCIATION WITH  
JAMIE deROY

PRESENTS

# PEERLESS

BY

JIEHAE PARK

DIRECTED BY

MARGOT BORDELON

## CAST

Dirty Girl, Preppy Girl..... MARIÉ BOTHA  
 BF..... ANTHONY CASON  
 M..... SASHA DIAMOND  
 D, D's Brother..... BENNY WAYNE SULLY  
 L..... SHANNON TYO

Production Stage Manager..... MEGAN SCHWARZ DICKERT  
 Assistant Stage Manager..... MALIE FUJII

Scenic Design..... KRISTEN ROBINSON  
 Costume Design..... AMANDA GLADU  
 Lighting Design..... MEXTLY COUZIN  
 Sound Design and Composition..... PALMER HEFFERAN  
 Fight Direction..... MICHAEL ROSSMY  
 Props Supervisor..... SEAN SANFORD  
 Cultural Consultant..... VICKIE RAMIREZ

Casting..... STEPHANIE YANKWITT, CSA  
 Casting Associate..... TANIS PARENTEAU  
 TBD CASTING

General Press Representative..... MATT ROSS PUBLIC RELATIONS

## PRODUCTION

COVID Safety Manager..... TAMEISHIA PETERSON  
 Vocal Coach..... JANE GUYER FUJITA  
 Assistant Vocal Coach..... JILLIAN COURTNEY  
 Assistant Production Manager..... AMBER RIGGLE  
 Assistant Scenic Designer..... RYAN DZIEDZIECH  
 Assistant Costume Designer..... SCOTT PENNER  
 Assistant Lighting Designer..... JUST JUST  
 Assistant Sound Designer..... BAILEY TRIERWEILER  
 Production Electricians..... DAN MULLINS, JOHN ANSELMO,  
 MICHAEL FUDGE  
 Lighting Programmer..... JEFFREY D'AMBROSIO  
 Production Audio..... HAYDEN BEARDEN  
 Wardrobe Supervisor..... MOESHA PEREZ  
 Board Operator..... JASON GUILLAUME  
 Stagehand..... TRISTAN VINER-BROWN

Run time: 1 hour, 30 minutes, with no intermission

This Primary Stages production is made possible, in part, through the generous support of The Tow Foundation, public funds from the National Endowment for the Arts, and the New York City Department of Cultural Affairs in partnership with the City Council.

*peerless* was developed during Jiehae Park's 2019-2020 Tow Playwright Residency at Primary Stages. Previous production and development include: world premiere produced by Yale Repertory Theatre in New Haven, CT (James Bundy, Artistic Director and Victoria Nolan, Managing Director); developed by the Cherry Lane Mentor Project (Angelina Fiordellisi, Artistic Director); originally developed in the Soho Rep Writer Director Lab (Sarah Benson, Artistic Director and Cynthia Flowers, Executive Director).

## MARIÉ BOTHA

(*Dirty Girl, Preppy Girl*)



Marié Botha is a South African actress living in NYC. Theater: *BLKS* by aziza barnes (MCC Theater, dir. Robert O’Hara) and *You Lost Me* by Bonnie Metzgar (DCPA, dir. Margot Bordelon). TV: *Dickinson* on Apple TV+. Yale School of Drama MFA. *Dirty Girl* is full circle, IYKYK. ;)

---

## ANTHONY CASON

(BF)



New York Theater: Daniel Fish’s *Oklahoma!* (Broadway, St. Ann’s Warehouse), *Is God Is* (Soho Rep). Regional: *A Midsummer Night’s Dream*, *Love’s Labour’s Lost* (Commonwealth Shakespeare Company). TV/Film: *Power Book II: Ghost* (Starz), *Jessica Jones* (Netflix), *Law and Order: SVU* (NBC), *The Breaks* (VH1).

---

## SASHA DIAMOND

(M)



Broadway: *Significant Other*. Select Off Broadway: *Once Upon a (Korean) Time* (Ma-Yi), *Teenage Dick* (Ma-Yi & The Public), *Bobbie Clearly* (Roundabout), *Kentucky* (Ensemble Studio Theatre). Select TV: *Bull* (CBS), *New Amsterdam* (NBC), *NCIS: New Orleans* (CBS), *Magnum: PI* (CBS), *Tommy* (CBS).

---

## BENNY WAYNE SULLY

(D, D’s Brother)



An enrolled citizen of the Rosebud Sioux Tribe—home of the Sicangu Lakota Oyate—Benny is thrilled to be making his Off Broadway debut. He was a finalist for Yale’s Misty Upham New Native Actor Award (2021) and the WarnerMedia Access Talent Spotlight (2022). His friends call him ‘Bendy.’ You can too.

---

## SHANNON TYO

(L)



New York: *The Chinese Lady* (Ma-Yi at The Public, Lortel Award, Theater World Award, Drama Desk nomination), *Kentucky* (EST), *Bikeman* (Tribeca PAC). Select regional: Long Wharf Theatre (CT Critics Circle Award), Berkeley Rep, Baltimore Center Stage, Pioneer Theater, Barrington Stage, The Old Globe. SOVAS Award, Audiobook Narration.

## JIEHAE PARK

(Playwright)



Jiehae Park's plays include *peerless* (Yale Rep premiere), *Hannah & the Dread Gazebo* (Oregon Shakespeare Festival), *Here We Are Here* (Sundance, Berkeley Rep's Ground Floor, Princess Grace WIP @ Baryshnikov Arts Center), *The Aves* (Alley All-New, McCarter Spotlight Festival), and contributions to *Wondrous Strange* (Humana/ATL).

Awards: Steinberg, Leah Ryan, Princess Grace, Weissberger, ANPFWI, Blackburn Finalist. Development: Soho Rep, the Public, p73, ACT, CTG, Atlantic, Dramatists Guild Fellowship, Ojai, and the amazing Ma-Yi Writers Lab. Commissions: Playwrights Horizons, Yale Rep, Geffen, OSF. Residencies: MacDowell, Yaddo, Hedgebrook, McCarter/Sallie B. Goodman. As a performer, she most recently appeared in Celine Song's *Endlings* (NYTW, ART) and Ripe Time/Naomi Iizuka's adaptation of Murakami's *Sleep* (BAM Next Wave, Yale Rep). For TV, she has written for Hulu, Apple, and Anonymous Content. Former Tow Fellow and Hodder Fellow; current NYTW Usual Suspect, Lincoln Center Theater writer in residence, and New Dramatist.

---

## MARGOT BORDELON

(Director)

New York (selected): ...*what the end will be* (Roundabout), *Wives* (Playwrights Horizons), *Something Clean* (Roundabout), *Do You Feel Anger?* (Vineyard), *Eddie and Dave* (Atlantic), *Plot Points in Our Sexual Development* (LCT3), *Too Heavy For Your Pocket* (Roundabout), *The Pen* (Premieres NYC), and *A Delicate Ship* (Playwrights Realm). Regional productions at ACT Seattle, Actors Theatre of Louisville, Alliance, American Theater Company, Denver Center, Geffen Playhouse, Miami New Drama, Marin Theater Company, Steppenwolf, TheaterWorks Hartford, and the Wilma. Upcoming: *The Brightest Thing in the World* (Yale Rep). BFA: Cornish College of the Arts. MFA: Yale School of Drama.

[www.margotbordelon.com](http://www.margotbordelon.com)

---

## KRISTEN ROBINSON

(Scenic Designer)

Kristen Robinson is an award-winning designer, artist, and educator. Her work ranges from site specific installations to outdoor Shakespeare. Most recently, she has co-devised and directed a production of W. David Hancocks' *The Race of the Ark Tattoo*, and designed Heather Christian's *Oratorio for Living Things* at Ars Nova and *Straight White Men* at the Westport Country Playhouse. A founding member and liaison of Equity Through Design Mentorship, she is also the assistant professor of scenic design at Purchase College. A Princess Grace Fellow, she holds her MFA in Theatre Design from Yale University and is a member of USA829.

---

## AMANDA GLADU

(Costume Designer)

Amanda Gladu is a costume designer, illustrator, and painter working in theater, dance, opera, and film. Select recent designs: *These Five [Dichotomous Being]* (Jacob's Pillow), *Cabaret* (Hangar Theatre), *Untold* (Para/Mar Dance Theatre), *The Jury* (Theatre Now NY), *Side Effects* (Parsons Dance), *Dance Nation* (The Wilma Theater). MFA Northwestern University.

[www.amandagladu.com](http://www.amandagladu.com)

## MEXTLY COUZIN

*(Lighting Designer) (she/ella)*

Credits include working on Broadway: Roundabout. Off Broadway: Second Stage, Bushwick Starr, MCC, Playwrights Horizons, Clubbed Thumb. Regional: Opera Parallèle, Center Theater Group, The Old Globe, Repertory Theatre St. Louis, Oregon Shakespeare Festival, San Diego Symphony, Malashock Dance Company. MFA, University of California, San Diego 2020.

[www.mextlycouzin.com](http://www.mextlycouzin.com)

## PALMER HEFFERAN

*(Sound Designer, Composer)*

Palmer Hefferan is a Tony-nominated sound designer and composer for theater and podcasts. She has worked at theaters throughout New York City and across the United States, including Lincoln Center, Roundabout Theatre, MCC Theater, Manhattan Theatre Club, Soho Rep, Signature Theatre, Primary Stages, The Public Theater, and Atlantic Theater Company.

## MICHAEL ROSSMY

*(Fight Director)*

East Coast-based fight/intimacy director. Broadway includes *A Tale of Two Cities*. Numerous Off Broadway and Regional, including The Public, Roundabout, Old Globe, Westport Country Playhouse, Paper Mill, Asolo Rep, Guthrie, and many more. Resident Fight and Intimacy Director for Yale Rep. Lecturer in Acting and Stage Management, DGSD at Yale.

## SEAN SANFORD

*(Props Supervisor)*

Sean Sanford is NYC-based theater artist and technician, and is thrilled to be working on *peerless*. Sean holds dual degrees in Theater and Psychology from UMass Amherst. Sean does props, assistant design, carpentry, painting, and rigging for theaters all over NYC and CT, and is an avid draftsman.

[www.SeanSanfordDesign.com](http://www.SeanSanfordDesign.com)

## VICKIE RAMIREZ

*(Cultural Consultant) (Tuscarora)*

Vickie Ramirez is a playwright, director, theater-maker, and educator based in New York City. A founding member of ChukaLokoli Native Theatre Ensemble and resident playwright at New Dramatists, her plays include *Yuchéwahkenh*, *Apple*, *Smoke*, *Ashes*, *Pure Native*, *Standoff at Highway #37*, *Snooky is A Terrorist*, and *Glenburn 12 WP*.

## TAMEISHIA PETERSON

*(COVID Safety Manager)*

Tameishia Peterson is an actor, singer, and writer outside of her duties as COVID Safety Manager. This is her third production as COVID Safety with Primary Stages and she is happy to ensure theater can commence as safely as possible. She has a heart for her family and friends, and enjoys roller skating and swimming. God is Good!

[@BedroomMonologues](https://www.instagram.com/BedroomMonologues)

## MEGAN SCHWARZ DICKERT

(Production Stage Manager)

New York: Roundabout, Lincoln Center/LCT3, Atlantic, Vineyard, Playwrights Horizons, Civilians, TFANA, NYTW, Page 73, Public, Clubbed Thumb (affiliated artist), WP Theater, CSC, Playwrights Realm, Play Company, Juilliard, Rattlestick, Foundry, Bedlam, Working Theater, 13P, Flea, Builders Association, New Georges. Regional: Kennedy Center, NYSAF, Westport, Bard SummerScape, Hartford Stage, Williamstown, Long Wharf, Actors Theatre of Louisville, Trinity Rep, Adirondack Theatre Festival, Big Apple Circus, Capital Rep, and Idaho, North Carolina, Utah, and Nebraska Shakespeare Festivals. Megan is an advanced open water scuba diver and has run five marathons.

## MALIE FUJII

(Assistant Stage Manager) (she/her)

Malie pronounces her name "muh-LEE-ay foo-JEE-ee" and resides on the lands of the Coast Salish and Lenape peoples. She is a Yonsei Japanese American theater maker who prioritizes projects that center Global Majority artists, communities, and abundance. Recent Seattle credits: The 5th Avenue Theatre, Seattle Rep, Sound Theatre.

## STEPHANIE YANKWITT, CSA TBD CASTING CO.

(Casting Director)

Theatrical collaborators include Primary Stages, Soho Rep, Tectonic Theater Project, NAATCO, La Jolla Playhouse, Long Wharf Theatre, and Miami New Drama. Current film collaborators include ongoing work with Culture House, O Positive Films, AFI, Lexicon Films, and The Gotham Film & Media Institute. Series include *Growing Up* (Disney+) and *Who You Callin' a Bitch* (Netflix) - both for Culture House. Member: CSA Equity in Entertainment committee.

@tbdcastingco

## THE TOW FOUNDATION

Launched in 2014, The Tow Foundation's Playwright-in-Residence Program provides transformational opportunities for playwrights to hone their craft and produce their first play on a New York City stage. Residencies are awarded to New York City theaters to support and present the work of a pre-selected playwright. The award integrates the selected playwright into the theater's day-to-day operations and includes a full-time salary and benefits, allowing each playwright to gain experience and insight into all aspects of the nonprofit theater world. Primary Stages has been proud to host Sharon Washington (*Feeding the Dragon*) and Jiehae Park (*peerless*) as Tow Playwrights-in-Residence.

## JAMIE deROY

(Co-Producer)

Jamie deRoy started producing theater by accident...which has led to 10 Tony Awards and credits on 100+ Broadway and Off Broadway shows, including: *Leopoldstadt*, *The Piano Lesson*, *Death of a Salesman*, *Ohio State Murders*, *The Lehman Trilogy*, *Hangmen*, *TINA*, *Ain't Too Proud*, *Company*, *The Inheritance*, *Beetlejuice*, *To Kill a Mockingbird*, and *The Play That Goes Wrong*, among others. For Primary Stages, Jamie has co-produced 25 shows, including *Downstairs*, *Dividing The Estate*, *Feeding the Dragon*, and *Exit Strategy* (Off-Broadway Alliance Award, Best Play), among others. Additional awards include nine MAC Awards, nine Drama Desk awards, two Audience Choice Awards, 10 Drama League Awards, three GLAAD Awards, four Back Stage Bistro Awards, numerous Telly Awards and CaB Magazine's Lifetime Achievement Award. She has been honored by Theatre Works/USA, Albert Einstein Spirit of Achievement, The Ruth Kurtzman Benefit Award, and Primary Stages – twice! A frequent presence on the New York night scene, Jamie has produced nine CDs for the *Jamie deRoy & friends* series on Harbinger and PS Classics. Her long-running variety shows have benefitted The Entertainment Community Fund (formerly The Actors Fund) and she also hosts a TV variety show which has been on the air for over 30 years. Onstage, she appeared with René Auberjonois in *The Threepenny Opera* and *The Drunkard* with musical direction by Barry Manilow. Other producing credits include *Jamie deRoy & friends*, *CityArts* including the Emmy nominated *The Biggest Little Operas in Town*, and the documentaries *Broadway: The Golden Age* and *Broadway: Beyond the Golden Age*. Jamie has also produced two short films: *Wish on the Moon* (16 Film Festivals) and *Daddy's Girl*, just released.

## PRIMARY STAGES

Primary Stages is an Off-Broadway not-for-profit theater company dedicated to inspiring, supporting, producing, and sharing the art of playwriting. We operate on the strongly held belief that the future of American theater relies on nurturing playwrights and giving them the artistic support needed to create new work. Since our founding in 1984, we have produced more than 135 new plays. Our productions and artists have received critical acclaim, including numerous Tony, Obie, Lortel, Off-Broadway Alliance, AUDELCO, Outer Critics' Circle, Drama League, and Drama Desk awards and nominations. Primary Stages supports playwrights and develops new works through commissions, workshops, readings, and our education and engagement programs: the Dorothy Strelsin New American Writers Group, Marvin and Anne Einhorn School of Performing Arts (ESPA), Creative Access Grants, the Echoes Writers Group, our Free Student Matinee Program, and the Primary Stages Off-Broadway Oral History Project. Through these programs, Primary Stages advocates for our artists, helping them make important—and often transformative—connections within the theater community. For more information on Primary Stages and our various programs, please visit us at [www.primarystages.org](http://www.primarystages.org).

---

### ANDREW LEYNSE

*(Artistic Director)*

Andrew Leynse is currently in his 18th season as Artistic Director of Primary Stages. Andrew is a director and founding member of the Primary Stages Dorothy Strelsin New American Writers Group (now in its 26th year), and teaches for Primary Stages ESPA (Einhorn School of Performing Arts) and The Tepper Semester for Syracuse University. Andrew is a proud Board Member of A.R.T./New York and the Colorado New Play Festival, and is a graduate of Carnegie Mellon's Directing Program.

---

### SHANE D. HUDSON

*(Executive Director)*

Shane D. Hudson is a graduate of the Yale School of Drama and Emerson College. Shane has served as Director of Development at Elevator Repair Service, Managing Director of the Yale Cabaret, Associate Director of Development at PlayMakers Repertory Company, General Manager/Marketing Director for Blue Man Group, Theater Manager of the Charles Playhouse, and Executive Director of StageSource. He is an adjunct professor at Marymount Manhattan College.

---

### CASEY CHILDS

*(Founder)*

Casey Childs founded Primary Stages in 1984 and has directed many productions for the company. He served as the Artistic Program Director for the New Dramatists from 1981-1985 and was the recipient of the Carnegie Mellon Commitment to New Playwrights Award, as well as two Emmy Awards and many nominations for his extensive work in television. He is a past Vice President of the Directors' Guild of America and a past trustee of The National Association of Television Arts and Sciences. Casey has a BFA in acting and an MFA in directing from Carnegie Mellon University.



**PRIMARY** STAGES

**38TH ANNUAL *Gala***  
**IN PERSON AT SONY HALL!**

Honoring Playwright and Actor

**CHARLES BUSCH**

and Director

**CARL ANDRESS**

with the Einhorn Mentorship Award



*(The Confession of Lily Dare,  
The Tribute Artist)*

**TUESDAY, NOVEMBER 15, 2022**

Cocktail Hour 6pm | Dinner & Performances 7pm  
at Sony Hall (235 W 46th Street New York, NY)

**TICKETS ON SALE NOW AT**  
**PRIMARYSTAGES.ORG/GALA**

## PRIMARY STAGES STAFF

ANDREW LEYNSE ..... Artistic Director  
SHANE D. HUDSON ..... Executive Director  
CASEY CHILDS ..... Founder

SUE BREGER ..... Government and Education Affairs  
DEAN A. CARPENTER ..... General Manager  
GABRIELLA CUELLAR ..... Production Intern  
ERIN DALEY ..... Associate Artistic Director  
WILL DUTY ..... Production Manager  
DAVID L. GOLDSMITH ..... IT and Rentals, Manager  
JOSHUA MARTINEZ ..... Marketing and Development Fellow  
SARAH MATTEUCCI ..... Director of Education and Strategic Planning  
CLAUDIA McCOY ..... Company Manager  
LUCY McMICHAEL ..... Associate to the Artistic Director  
NORA MONAHAN ..... Manager of Individual Giving and Special Events  
SALLY PLASS ..... Off-Broadway Oral History Project Director  
CAYLA QUINN ..... Artistic Fellow  
ERICA RAVEN-SCORZA ..... Director of Development  
BRI NG SCHWARTZ ..... Education and Community Outreach Manager  
TED STEPHENS III ..... Graphic Designer, The Numad Group  
ALEX VALDEZ ..... Communications Manager  
SOFIA VILCHES ..... Development and Communications Assistant  
LIZHU ZHANG ..... Development and Communications Intern

General Press Representative ..... MATT ROSS PUBLIC RELATIONS:  
MATT ROSS, LIZ LOMBARDI, CLAIRE WOJCIECHOWSKI  
Casting Director ..... STEPHANIE YANKWITT, CSA  
Casting Associate ..... TANIS PARENTEAU  
TBD CASTING

Dorothy Strelsin New American Writers Group ..... KEVIN ARTIGUE,  
BENJAMIN BENNE, HILARY BETTIS, ELIZABETH IRWIN, JON KERN,  
MATTHEW MINNICINO, LILIANA PADILLA, MADHURI SHEKAR  
Company-in-Residence ..... LATINX PLAYWRIGHTS CIRCLE  
Louise Rockwell Scholars ..... AARON COLEMAN, SHAUN BENNET FAUNTLEROY,  
HANNAH HARTMANN, JONATHAN KIM PHILLIPS, CLARO de los REYES  
Accountants ..... WITHUMSMITH+BROWN, PC  
Legal ..... ANDREA RISOLI, ESQ.  
Insurance ..... DeWITT STERN GROUP  
Finance Consultant ..... ERICA WHELAN

## SPECIAL THANKS

The Staff of 59E59 Theaters, Hayden Production Services,  
Hilbolic Scenery, Five Ohm Productions.

Thank you to all the artists who have been part of this play's journey  
(especially Tiffany Villarin, Teresa Avia Lim, Chris Livingston, Oliver Wason,  
and Molly Clifford); Erin Daley; the Ma Yi Writers Lab; the Tow Foundation;  
and to Rhianna Yazzie, Chay Yew, Larissa Fasthorse, Daniel Pearce,  
and Artie Pesh-Imam for their time, generosity, and wisdom."



The actors and stage managers employed in this production  
are members of Actors' Equity Association, the union of  
professional actors and stage managers in the United States.



The Designers at this Theatre  
are Represented by  
United Scenic Artists • Local USA 829  
of the International Alliance of Theatrical Stage Employees



The Director is a member of the  
STAGE DIRECTORS AND CHOREOGRAPHERS  
SOCIETY, a national theatrical labor union.

## ALLIANCE OF RESIDENT THEATRES

Primary Stages is a member of the Alliance of Resident Theatres/New York,  
the service organization for NYC's non-profit Off- and Off-Off-Broadway theatres.



## PRIMARY STAGES CORPORATE AND FOUNDATION DONORS

Primary Stages gratefully acknowledges the generous support of the following institutions:

### \$50,000 AND ABOVE

NYC COVID-19 Response & Impact Fund in The New York Community Trust  
The Howard Gilman Foundation ◊  
Laurents/Hatcher Foundation  
The Lucille Lortel Foundation ◊  
The Shubert Foundation  
The Harold & Mimi Steinberg Charitable Trust,  
The Tow Foundation ◊  
The Winston Foundation, Inc.

### \$25,000-\$49,999

The Cornelia T. Bailey Foundation  
The Blanche and Irving Laurie Foundation ◊  
The Ambrose Monell Foundation ◊  
The Rockwell Foundation  
The SHS Foundation  
Virginia B. Toulmin Foundation ◊

### \$10,000-\$24,999

Con Edison  
Gibson Dunn  
JTS Fund of the New York Community Trust  
The Marc Haas Foundation

### \$5,000-\$9,999

Axe-Houghton Foundation  
Colgate-Palmolive Urban Education Fund  
Dr. Scholl Foundation  
Francena T. Harrison Foundation Trust  
The Hyde & Watson Foundation  
The Marta Heflin Foundation  
Richenthal Foundation  
The Dorothy Strelsin Foundation\*  
Synchrony Financial\*  
The Michael Tuch Foundation

### \$1,000-\$4,999

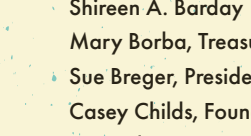
Actors' Equity Foundation  
BRS/Gage\*  
The John Golden Fund  
The Herman Goldman Foundation  
The Numad Group\*  
Paradigm Talent Agency\*  
The Jerome Robbins Foundation  
SAG-AFTRA  
The Shubert Organization\*  
The Geraldine Stutz Trust  
The Ellen M. Violett & Mary P.R. Thomas Foundation

\* Includes gifts made to the 2021 Primary Stages Gala.

◊ Includes gifts made to the 35th Anniversary Campaign for the Future of Primary Stages.

## PRIMARY STAGES GOVERNMENT SUPPORT

The Primary Stages Season is supported, in part, with public funds from the National Endowment for the Arts, the New York City Department of Cultural Affairs in partnership with the City Council, and the New York State Council on the Arts with the support of the Office of the Governor and the New York State Legislature.



## PRIMARY STAGES BOARD OF DIRECTORS

Janet Reed Ahearn  
Shireen A. Barday  
Mary Borba, Treasurer  
Sue Breger, President Emerita  
Casey Childs, Founder  
Jamie deRoy  
Douglas Durst  
Arlene L. Goldman  
Beth Green  
Adam Gwon  
Kate Hamill  
Eleanor Holtzman, Second Vice President  
Shane D. Hudson, Executive Director  
Elisabeth Lerner  
Andrew Leynse, Artistic Director  
Gregory M. Macosko  
Marla Persky, President  
Theresa Rebeck  
Robin Rednor-Veghte  
Carol Roaman  
Janet B. Rosen  
Carol Scibelli  
Jeremy Smith  
Ted Snowdon  
Amit Solomon  
Sarah Steinberg, Secretary  
Arline Vogel, First Vice President  
Sharon Washington

## EMERITUS MEMBERS

Dasha Epstein  
Marlene H. Freeman  
Douglas M. Green  
Jonathan C. Herzog  
Ann Blumenthal Jacobs  
Karen La Rosa  
Jose Mendez  
Doug Nevin

## IN MEMORIAM

Geoffrey Chinn  
Marvin and Anne Einhorn  
Michael Fabrikant  
Louise Rockwell  
Robert Sorensen  
Sandra Westin  
Elizabeth Wilson

## PRIMARY PARTNERS

Primary Partners are generous individual donors who share a love of Primary Stages and our mission. Partners can choose to either take a full tax deduction for their gift or receive exclusive benefits, including personal assistance from the Development Department staff, priority seating in prime locations, invitations to intimate events with today's leading playwrights and actors, and much more. To learn more about becoming a Primary Partner and other giving opportunities, please visit us online at [primarystages.org/support](http://primarystages.org/support).

## ANGELS

Anonymous ◊  
Casey Childs\* ◊  
The Durst Family\* ◊  
Daniel & Rosele Frishwasser  
Arlene L. Goldman\* ◊  
Herrick Theatre Foundation  
Eleanor Holtzman & Alexander Holtzman, in memoriam\* ◊  
Ann Blumenthal Jacobs & Irwin Jacobs, in memoriam\* ◊  
Gregory Macosko & Sharon A. Zane\* ◊  
Jose Mendez & Katie Graziano ◊  
Marla Persky & Craig Heberton IV\* ◊  
Carol Roaman\* ◊  
Janet B. & Marvin Rosen\* ◊  
Ted Snowdon & Duffy Violante\* ◊  
Barbara & David Thomas ◊

## LEADING PLAYERS

Sue Breger\* ◊  
Jamie deRoy\* ◊  
Leslie & Johanna Garfield, in memoriam\*  
Jeremy T. Smith\*  
Amit Solomon\* ◊  
Sarah Steinberg\* ◊  
Sharon Washington & Charles Schultz\*  
Arline Vogel & Harry Precourt, in memoriam\* ◊

## ENSEMBLE

Anonymous  
Shireen Barday & Zahreen Ghaznavi\*  
The Svante Bergstrom Theater Foundation  
Anne L. Bernstein, in memoriam\* ◊  
Mary and Philip Borba\*  
Diane L. Charlap\*  
Dasha Epstein\*  
Jay & Diane Goldsmith\*  
Russel T. Hamilton  
Catherine Fisco Holmes  
Andrea & Scott Kimmelman ◊  
Karolynn Lestrud  
The Greg and Mari Marchbanks Family Foundation\*  
Theresa Rebeck & Jess Lynn\*  
Robin Rednor-Veghte & Robert Kennedy\* ◊  
Charles & Deborah Royce ◊  
Carol Scibelli\* ◊  
Mary Susnjara\*  
Bob & Ginny Walther ◊  
Elizabeth Wilson, in memoriam ◊

## SPOTLIGHT

Anonymous  
Margot Astrachan  
Stefany & Simon Bergson\*  
Eli & Roberta Bluestone  
Kathleen & Robert Bojanek ◊  
Bertha Goldman, in memoriam ◊  
David & Martha Ives ◊  
Renee Landegger & Susan Rose\*  
Bill Martin\*  
Jeffrey Melnick, in memoriam  
Jill Mortensen & Kay Phillips\* ◊  
Hubert Neumann & Debra Purden ◊  
Mary Ann & Bruno A. Quinson\* ◊  
Barton & Jane Shallat  
Edward Trach\*  
Christian & Lonna Yegen

## CENTERSTAGE

Kristen Anderson-Lopez & Robert Lopez  
Mr. and Mrs. Byron Boston\*  
Paula Kaminsky Davis\*  
Cory & Bob Donnalley Charitable Foundation  
Elliot Fox & Stephanie Lubroth ◊  
Sonia Friedman\*  
Steven Goldman\* ◊  
Valerie Gordon-Johnson & Doug Johnson\*  
Kate Hamill & Jason O'Connell\*  
Willy Holtzman & Sylvia Shepard\* ◊  
Paul & Emily Kandel\* ◊  
Sharon Karmazin  
Drs. Judith & Sheldon E. Kaufman\* ◊  
Susan Kennedy\*  
Riki Kane Larimer\*  
Allan & Anita Lubarsky ◊  
Jeanne & Mike Manto\*  
Stephen & Carolyn McCandless ◊  
John K. Orberg  
Lisa Orberg  
Laurel J. Richie\*  
Mickey Rolfe & Bruce Tracey\*  
Francis H. Williams & Keris Salmon  
R.Lee Stump & Abigail Roth

## UPSTAGE

Janet Reed Ahearn & Dan Ahearn\*  
Doreen Cronin ◊  
Susan Garruto\*  
Lynne Halliday & B.H. Barry\*  
Margaret & Tom Haughey ◊  
Martin Hummel ◊  
Jan Nolte & Brad Cooke\*  
Niki & Tony Scialli  
Steven Shane\*  
Tracey Scott Wilson & Karen Thompson\*

## DOWNSTAGE

Wendy Barasch\*  
Constance Beaty  
Vivian Cardia  
Tom & Linda Dupree  
Michael A. Ellenberg  
Robert H. and Elizabeth Fergus Foundation  
Jennifer & Claude Fiset  
Angelina Fiordellisi & Matt Williams\*  
Tom Fontana & Sagan Lewis\*  
Yvette A. Geary\*  
Shirley & David Ginzberg  
Tony Gleason\*  
Catherine & Charles Gropper\*  
Barry Grove\*  
Jeffrey Gural\*  
Molly Gurney  
Edward & Julia Hansen Foundation  
Nancy Hollander ◊  
Whitney Keen & Fred Keen, in memoriam  
Heni Koenigsberg  
Lee Laimbeer  
Robert O'Hara\*  
Daryl Roth  
Holly Rothkopf & Stuart Eisenberg  
Nancy L. Savitt & Bill Farrell  
Alice Scovell  
Dan Shaheen\*  
Robert Skolnick  
Susan Stroman\*  
Kara Unterberg ◊

## IN THE WINGS

David Ball  
Bernadette Beekman\*  
Muriel & Carl Binder\*  
Laurie Braun  
Donald Brennan & Lucy McMichael  
David L. Calhoun  
Jean & Juan Carlos Cappello\*  
Nancy & Ronald G. Carr  
Cicely Cottingham & Victor Davson\*  
Carol Dallos & Michael Fabrikant, in memoriam  
Kenneth & Lori Einhorn\*  
Aunjanue Ellis\*  
Judith Esterquest  
Margery Feldberg  
Dr. Leonard Freeman, Marlene Freeman & Joy Freilich\*  
Catherine Freter  
Karen & Ira Gerard  
Adam Gwon  
David L. Goldsmith\*  
Warren Handelman\*  
Christopher Harris  
Henry Harrison  
Marin Hinkle  
Andrea & David Holbrook  
David Horowitz\*  
Allison Hinds-Pearl & Scott Pearl\*  
Elizabeth & John Hovey-Jiler\*  
John Kelso\*  
Anna Kisselgoff\*  
Bernard & Carol Kossar Foundation\*  
Arlene & Richard Kossoff\*  
Gregory Lehane & Laurie Klatscher  
Myla Lerner & Larry Kramer\*  
Dayna Lucas  
Donald Margulies & Lynn Street  
Drs. Marlene Marko & Loren Skeist  
Theresa Martinac  
B.T. McNicholl\*  
Arthur & Merle Nacht  
The Asha & D.V. Nayak Fund  
Carol Ochs\*  
Jeffrey & Liz Passero\*  
Martha Pichey\*  
Mark Planner  
Marsha Rabiteau\*  
Hilary Richards\*  
Christopher Rose\*  
Leslie & Richard Roth  
Deborah & Sheldon Rubin\*  
Karin Schall\*  
Patricia Brown Specter  
David & Bronwyn Starr\*  
Sylvia Steiner\*  
Mary Tynes  
Diana Vozza & William Garcia\*  
Cheryl Wiesenfeld  
Constance B. Wingate  
Jacqueline Woodson\*  
Mary Young  
Lorraine Zegibe\*  
Ellen & Allen Zerklin

\* Includes gifts made to the 2021 Primary Stages Gala.

◊ Includes gifts made to the 35th Anniversary Campaign for the Future of Primary Stages.

The list reflects contributions received as of September 9, 2022. We apologize for any omissions or errors. Due to space limitations, we are unable to list all contributors. Primary Stages wishes to thank all of our generous donors.



## CURATOR'S NOTE

Welcome to our Resident Company, Primary Stages', production of *peerless*. Since its founding in 1984, Primary Stages has dedicated itself to inspiring, supporting, producing, and sharing the art of playwriting. This staging of Jiehae Park's play is yet another fine example of their commitment and dedication to living their mission. It's a true honor to regularly share work from this esteemed organization with you.



Val

VAL DAY  
Artistic Director

## 59E59 THEATERS STAFF

ELYSABETH KLEINHANS President/Founding Artistic Director

VAL DAY Artistic Director

BRIAN BEIRNE Managing Director

ELIZA JOHNSON Finance Associate/Office Manager

CATE PUGLIA Receptionist/Administrative Assistant

MELISSA SHAWCROSS Technical Director

CRISTINA GREENFIELD Marketing Manager

MELINDA GRABER Digital Marketing Associate

ALAN BUTTAR Graphic Designer

MATT ROSS Press Representative

NICOLE CAPATASTO Press Representative

CLAIRE WOJCIECHOWSKI Press Representative

GRACE WALKER Press Representative

SHANNON SMITH Theater Manager

COLLEEN MORGEN House Manager

JOHNATHAN PRICE Facilities Manager

WALDIN ROJAS Facilities Assistant

FRANKIE DIAZ Facilities Assistant

LLOYD MULVEY Director of Ticketing Services

CRAIG SCHENKER Box Office Manager

ANDREA ARVANIGIAN Box Office Supervisor

JORDAN ELMAN Box Office Supervisor

DANIELLE COVINGTON Box Office Supervisor

CAILIN KELLY Box Office Associate

MICIAH WALLACE Box Office Associate /Usher

ALANIS MOLINA-GARNELO Usher

ANNA BONGARDINO Usher

ANNE RUTTER Usher

BENJI SILLS Usher

CHRISTIAN MIRANDA Usher

ELLIOT JACOBS Usher

ERIC BERKELEY Usher

FLOWER RIOS Usher

ITAI ADAM VAGNER Usher

JOEY PITTORINO Usher

KAYLA GRANT Usher

NATALIE LILAVOIS YUSTY Usher

RICHARD RODRIGUEZ Usher

SANTIAGO AGUILAR Usher

AMBER RIGGLE Theater Technician

JOHN D. IVY Theater Technician

KAT KHELLBLAU Theater Technician

## THEATER A

NOVEMBER 17 — 27



THE LITTLE OPERA THEATRE OF NY  
in association with  
HARLEM OPERA THEATER and  
NATIONAL BLACK THEATER present

HIGHWAY 1, U.S.A.

By WILLIAM GRANT STILL  
and VERNA ARVEY

DOWN IN THE VALLEY

By KURT WEILL  
and ARNOLD SUNDGAARD

Conducted By GREGORY HOPKINS  
Directed By PHILIP SHNEIDMAN

## LAND ACKNOWLEDGEMENT

59E59 Theaters reside on the traditional homelands of the Leni-Lenape People on the Lenape Island of Mannahatta. We acknowledge the Leni-Lenape as the original people of the land who were forcefully removed during colonization resulting in erased and excluded peoples and culture. We are grateful for the opportunity to work on the land and honor their elders, past and present alongside future generations for their stewardship and continuing relationship with their territory.

This presentation is not a production of the Elysabeth Kleinhans Theatrical Foundation, Inc., which offers its facilities, when available, for productions by not-for-profit theater companies. For further information regarding licensing this theater or other theaters in this Theater Building, contact Brian Beirne, Managing Director. The use of cameras and other recording devices in the Theater is prohibited by law. There is no smoking in this Theater or any part of the Theater Building.